

Hotel Accommodations



Hilton Tucson El Conquistador Golf & Tennis Resort
 10000 North Oracle Road
 Tucson, AZ 85704
 Reservations: 520-544-5000
https://secure.hilton.com/en/hi/res/choose_dates.jhtml?hotel=TUSHTHH&spec_plan=ASL

Reservation Deadline:
April 17, 2017

Room rate:
\$135

Parking: Self-parking (Complimentary)

The **ArSHA** room block will be available until April 17, 2017, or until the room block sells out, whichever occurs first. The hotel will continue to accept reservations for ArSHA after the cutoff date; however these reservations will be based on availability and may be at a higher rate.

Exhibitors

**check
 IT
 out**

Visit with exhibitors and find out about new products and career opportunities available throughout Arizona. Representatives from a variety of companies are expected to attend.

Access to the Exhibit Hall is included with your Convention registration.

Is your company, agency, school or employer interested in being an exhibitor? Visit the ArSHA website and return the Exhibitor Form to the ArSHA Office by **March 17, 2017**. Each company will be provided with a table for displaying materials.



MORE DETAILS AT WWW.ARSHA.ORG

Highlighted Presenters



Creative Ideas for Using iPad Apps in Speech-Language Therapy,
 Erik Raj, PhD, CCC-SLP



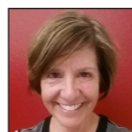
School-Age Stuttering Therapy: Cognitive/Affective Needs and Resources, Nina Reardon Reeves, MS, CCC-SLP



Keeping Therapy Engaging: Fast, Fun and Motivating Reinforcers,
 Amy Hill, MA, CCC-SLP



Training and Implementation of Interpreters in Speech-Language Pathology and Audiology,
 Leah Fabiano-Smith, PhD, CCC-SLP



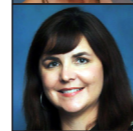
Thinking of Grad School? Application Tips for Future SLPs,
 Catherine Bacon, MA, CCC-SLP



The Clinical Challenge of Diagnosing and Managing Central Auditory Processing Disorder,
 Zarin Mehta, AuD, CCC-A, FAAA



A Treatment Continuum for Aphasia, Alexia and Agraphia & Treating Naming Impairments in Primary Progressive Aphasia,
 Paige Beeson, PhD, CCC-SLP;
 Kindle Rising, MS, CCC-SLP



Assessment and Treatment Strategies in Head and Neck Cancer: State of the Art and the Mayo Clinic Model,
 Lisa Crujido, MS, CCC-SLP



Preparing Audiologists for the Changing World of Hearing Health Care,
 Neil DiSarno, PhD, CCC-A

Continuing Education



The Arizona Speech-Language-Hearing Association is approved by the Continuing Education Board of the American Speech-Language-Hearing Association (ASHA) to provide continuing education activities in speech-language pathology and audiology. **See course information for number of ASHA CEUs, instructional level and content area.** ASHA CE Provider approval does not imply endorsement of course content, specific products or clinical procedures.

This course is offered for up to 1.45 ASHA CEUs (various levels, professional area).

Pending: Pre-approval for up to 14.5 continuing education hours by the Arizona Department of Health Services.

Attendees are expected to be present for an entire session. Individuals who are not present for the full session will not receive ASHA CEUs. No partial credit will be provided.

Refunds/Cancellations: Refunds minus a \$40 handling fee will be made if cancellations are received by April 10, 2017. **No refunds will be made after this date.** Refunds will not be given for no-shows.

Registration

REGISTER ONLINE at www.arsha.org or complete the form below.

Name: _____

Address: _____

City: _____ State: _____ Zip: _____

Email Address: _____
(required for final CE submission)

Phone (h, w or c): _____

Special Assistance/Dietary Needs: _____

Registration Fees

Join ArSHA or renew your membership to qualify for Member Rates. Price includes breakfast each day and lunch on Saturday.

Convention Registration	Early Reg. on or before 3/13/17	Late Reg. after 3/13/17	Total Amount
Convention			
ArSHA Member	\$195	\$225	
Non-Member	\$350	\$380	
3 or more ArSHA members, same agency	\$185/person	\$215/person	
Student	\$50	\$80	
Single Day Registration			
ArSHA Member	\$175	\$205	
Non-Member	\$225	\$255	
3 or more ArSHA members, same agency	\$160/person	\$190/person	
Student	\$25	\$55	
Audiology Registration/One Day Only			
Audiologists	\$95	\$125	
ArSHA Membership Dues <input type="checkbox"/> New <input type="checkbox"/> Renewal			
Active		\$100	
Associate		\$75	
Student		\$15	
REGISTRATION/MEMBERSHIP TOTAL			

Payment Method

Check (payable to ArSHA) Mastercard Visa Discover AMEX

CC Number: _____

Exp. Date: _____

Mail: ArSHA, 700 McKnight Park Drive, Suite 708, Pittsburgh, PA 15237
 Fax: 888-729-3489



The ArSHA Convention Team is pleased to announce the highlighted presenters for the 2017 Annual Convention.

Please check the ArSHA website or ArSHA's Facebook page for updates to the Convention schedule and additional speakers and events.

Dear Speech-Language and Hearing Professionals,

If you or anyone you know are interested in receiving discounts on continuing education events or are interested in volunteer and leadership opportunities to influence our professions in Arizona, we would welcome your talents and membership. ArSHA is a terrific way to advocate and network with other professionals in the speech-language and hearing community right here in Arizona! To become a member please complete the enclosed registration form or go to www.arsha.org to complete the online membership application.

If you have any questions about membership, please email me at arsha@arsha.org.

Thank you!

Mandi Dionne
ArSHA Membership Chair

Friday, April 28

Join us FOR ALL THE FUN!

Happy Hour
5:00 pm

Praxis Bowl
5:30 pm

University teams comprised of top-notch students compete in a "quiz bowl" format to see which team can answer the most Praxis practice questions correctly! This session is designed for students preparing to take the Praxis examination, as well as professionals who want to refresh their basic knowledge skills while learning in a fun, interactive and competitive environment.

Like Arizona Speech-Language-Hearing Association on Facebook!



Presorted
Standard
U.S. Postage
PAID
Pittsburgh, PA
Permit #2191

ArSHA Office
700 McKnight Park Drive, Suite 708
Pittsburgh, PA 15237

Learning and Leading Together

2017 ArSHA Convention
April 28-29, 2017
Hilton Tucson El Conquistador
Golf & Tennis Resort

ARIZONA SPEECH-LANGUAGE-HEARING ASSOCIATION

Arizona Speech-Language-Hearing Association 2017 Convention

2017 ArSHA Convention
April 28-29, 2017
Hilton Tucson El Conquistador
Golf & Tennis Resort

ARIZONA SPEECH-LANGUAGE-HEARING ASSOCIATION

NEW THIS YEAR!
SLPA TRACK
&
BACK BY POPULAR DEMAND
SATURDAY AUDIOLOGY SESSIONS

ArSHA's Mission Statement:

Empowering Arizona's speech, language and hearing professionals through advocacy, leadership and professional development to serve those with communication and related disorders